

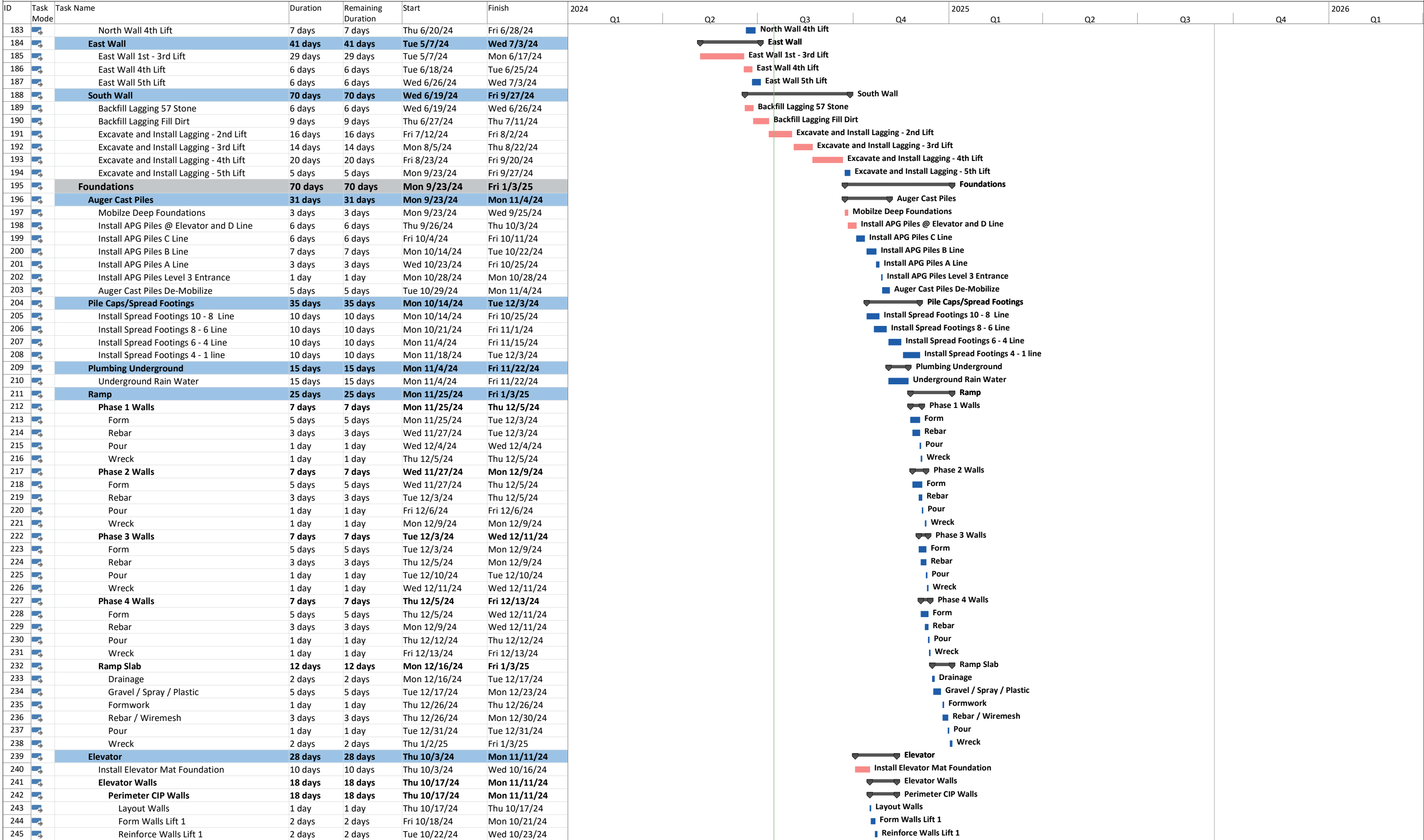
ID	Task Mode	Task Name	Duration	Remaining Duration	Start	Finish	2024				2025			2026		
							Q1	Q2	Q3	Q4	Q1	Q2	Q3	Q4	Q1	
0		Northside Hospital Cherokee Parking Deck - 22359	503 days	503 days	Tue 9/19/23	Fri 9/12/25	Northside Hospital Cherokee Parking Deck - 22359									
1		Milestones / Executive Summary	388 days	388 days	Wed 2/28/24	Fri 9/12/25	Milestones / Executive Summary									
2		Notice to Proceed	0 days	0 days	Wed 2/28/24	Wed 2/28/24	◆ Notice to Proceed									
3		GMP Submitted & Approved (SD Budget)	0 days	0 days	Wed 2/28/24	Wed 2/28/24	◆ GMP Submitted & Approved (SD Budget)									
4		Project Start / Mobilize	0 days	0 days	Wed 3/6/24	Wed 3/6/24	◆ Project Start / Mobilize									
5		Shoring Walls Start	0 days	0 days	Mon 5/6/24	Mon 5/6/24	◆ Shoring Walls Start									
6		Shoring Walls Finish	0 days	0 days	Fri 9/27/24	Fri 9/27/24	◆ Shoring Walls Finish									
7		Deep Foundations Start	0 days	0 days	Mon 9/23/24	Mon 9/23/24	◆ Deep Foundations Start									
8		Spread Footings Start	0 days	0 days	Mon 10/14/24	Mon 10/14/24	◆ Spread Footings Start									
9		Precast Structure Start	0 days	0 days	Mon 11/4/24	Mon 11/4/24	◆ Precast Structure Start									
10		Footings Finish	0 days	0 days	Tue 12/3/24	Tue 12/3/24	◆ Footings Finish									
11		Rough-In Start	0 days	0 days	Wed 12/4/24	Wed 12/4/24	◆ Rough-In Start									
12		Topping Slabs Start	0 days	0 days	Fri 12/27/24	Fri 12/27/24	◆ Topping Slabs Start									
13		Envelope Start	0 days	0 days	Tue 3/25/25	Tue 3/25/25	◆ Envelope Start									
14		Precast Structure Top-Out	0 days	0 days	Mon 3/31/25	Mon 3/31/25	◆ Precast Structure Top-Out									
15		Permanent Power	0 days	0 days	Wed 4/2/25	Wed 4/2/25	◆ Permanent Power									
16		Elevator Start	0 days	0 days	Thu 4/3/25	Thu 4/3/25	◆ Elevator Start									
17		Topping Slabs Complete	0 days	0 days	Mon 4/14/25	Mon 4/14/25	◆ Topping Slabs Complete									
18		Building Dry-In - Elevator Tower	0 days	0 days	Wed 5/14/25	Wed 5/14/25	◆ Building Dry-In - Elevator Tower									
19		Landscape/Hardscape Start	0 days	0 days	Thu 5/15/25	Thu 5/15/25	◆ Landscape/Hardscape Start									
20		Envelope Finish	0 days	0 days	Mon 5/19/25	Mon 5/19/25	◆ Envelope Finish									
21		Landscape/Hardscape Finish	0 days	0 days	Fri 6/13/25	Fri 6/13/25	◆ Landscape/Hardscape Finish									
22		Finishes Start	0 days	0 days	Fri 6/27/25	Fri 6/27/25	◆ Finishes Start									
23		Elevator Finish	0 days	0 days	Thu 6/26/25	Thu 6/26/25	◆ Elevator Finish									
24		Finishes Complete	0 days	0 days	Wed 9/3/25	Wed 9/3/25	◆ Finishes Complete									
25		Certificate of Occupancy	0 days	0 days	Fri 9/12/25	Fri 9/12/25	◆ Certificate of Occupancy									
26		Substantial Completion	0 days	0 days	Fri 9/12/25	Fri 9/12/25	◆ Substantial Completion									
27		Design	229 days	229 days	Tue 9/19/23	Fri 8/9/24	Design									
28		Contract Documents	219 days	219 days	Tue 9/19/23	Fri 7/26/24	Contract Documents									
29		Schematic Drawings (SD) Development	137 days	137 days	Tue 9/19/23	Fri 3/29/24	Schematic Drawings (SD) Development									
30		SD / LDP Package	50 days	50 days	Tue 9/19/23	Mon 11/27/23	Package									
31		SD / LDP Submission	1 day	1 day	Mon 11/27/23	Mon 11/27/23	Submission									
32		LDP Review	26 days	26 days	Tue 1/23/24	Tue 2/27/24	◆ LDP Review									
33		LDP Approval	1 day	1 day	Wed 2/28/24	Wed 2/28/24	◆ LDP Approval									
34		HRD Present Final Skin Option	1 day	1 day	Tue 1/23/24	Tue 1/23/24	◆ HRD Present Final Skin Option									
35		Skin Approval	1 day	1 day	Tue 1/23/24	Tue 1/23/24	◆ Skin Approval									
36		Establish Initial GMP/Execute Owner Contract	30 days	30 days	Mon 2/19/24	Fri 3/29/24	◆ Establish Initial GMP/Execute Owner Contract									
37		Design Drawings (DD) Development	101 days	101 days	Wed 11/29/23	Fri 4/19/24	Design Drawings (DD) Development									
38		DD / Sitework Coordination	71 days	71 days	Wed 11/29/23	Fri 3/8/24	◆ DD / Sitework Coordination									
39		DD Pricing	28 days	28 days	Mon 3/11/24	Wed 4/17/24	◆ DD Pricing									
40		Review/Incorpoarte VE	2 days	2 days	Thu 4/18/24	Fri 4/19/24	◆ Review/Incorpoarte VE									
41		Construction Drawings (CD) Development	97 days	97 days	Mon 3/11/24	Fri 7/26/24	Construction Drawings (CD) Development									
42		CD / Permit Drawings	59 days	59 days	Mon 3/11/24	Fri 5/31/24	◆ CD / Permit Drawings									
43		CD Pricing	31 days	31 days	Mon 6/3/24	Wed 7/17/24	◆ CD Pricing									
44		Review / Finalize GMP	7 days	7 days	Thu 7/18/24	Fri 7/26/24	◆ Review / Finalize GMP									
45		Permits	115 days	115 days	Wed 2/28/24	Fri 8/9/24	Permits									
46		LDP	1 day	1 day	Wed 2/28/24	Wed 2/28/24	LDP									
47		LDP Received	1 day	1 day	Wed 2/28/24	Wed 2/28/24	◆ LDP Received									
48		Foundation Only Permit	15 days	15 days	Wed 6/5/24	Tue 6/25/24	Foundation Only Permit									
49		Foundation Permit Submission	1 day	1 day	Wed 6/5/24	Wed 6/5/24	◆ Foundation Permit Submission									
50		Foundation Permit Review	14 days	14 days	Thu 6/6/24	Tue 6/25/24	◆ Foundation Permit Review									
51		Foundation Permit Approval/Received	1 day	1 day	Tue 6/25/24	Tue 6/25/24	◆ Foundation Permit Approval/Received									
52		Building Permit (Remove Sprinkler Option)	22 days	22 days	Thu 7/11/24	Fri 8/9/24	Building Permit (Remove Sprinkler Option)									
53		Building Permit Submission	1 day	1 day	Thu 7/11/24	Thu 7/11/24	◆ Building Permit Submission									
54		Building Permit Review	20 days	20 days	Fri 7/12/24	Thu 8/8/24	◆ Building Permit Review									
55		Building Permit Approval/Received	1 day	1 day	Fri 8/9/24	Fri 8/9/24	◆ Building Permit Approval/Received									
56		Pre-Construction	126 days	126 days	Thu 2/29/24	Tue 8/27/24	Pre-Construction									
57		Procurement	126 days	126 days	Thu 2/29/24	Tue 8/27/24	Procurement									

ID	Task Mode	Task Name	Duration	Remaining Duration	Start	Finish	2024				2025				2026	
							Q1	Q2	Q3	Q4	Q1	Q2	Q3	Q4	Q1	
58		Retaining Wall Design	81 days	81 days	Thu 2/29/24	Fri 6/21/24										
59		Design Concept Finalized	18 days	18 days	Thu 2/29/24	Mon 3/25/24										
60		Preliminary Design	26 days	26 days	Tue 3/26/24	Tue 4/30/24										
61		Shop Drawings/Submittals	12 days	12 days	Wed 5/1/24	Thu 5/16/24										
62		Design Approval	15 days	15 days	Fri 5/17/24	Fri 6/7/24										
63		Permit Submission / Approval	9 days	9 days	Mon 6/10/24	Thu 6/20/24										
64		Material Procurement	1 day	1 day	Fri 6/21/24	Fri 6/21/24										
65		Shoring Wall Design	54 days	54 days	Thu 2/29/24	Tue 5/14/24										
66		Design Coordination	20 days	20 days	Thu 2/29/24	Wed 3/27/24										
67		Design Concept Finalized	13 days	13 days	Thu 3/28/24	Mon 4/15/24										
68		Shop Drawings/Submittals	12 days	12 days	Tue 4/16/24	Wed 5/1/24										
69		Design Approval	4 days	4 days	Thu 5/2/24	Tue 5/7/24										
70		Material Procurement	5 days	5 days	Wed 5/8/24	Tue 5/14/24										
71		Foundation Design	104 days	104 days	Mon 4/1/24	Tue 8/27/24										
72		Design Coordination	20 days	20 days	Mon 4/1/24	Fri 4/26/24										
73		Design Concept Finalized	5 days	5 days	Mon 4/29/24	Fri 5/3/24										
74		Design Drawing Revisions	19 days	19 days	Mon 5/6/24	Fri 5/31/24										
75		Metromount Shop Drawings/Submittals	20 days	20 days	Mon 6/3/24	Fri 6/28/24										
76		Design Approval	10 days	10 days	Mon 7/1/24	Tue 7/16/24										
77		Material Procurement	30 days	30 days	Wed 7/17/24	Tue 8/27/24										
78		Construction	384 days	384 days	Wed 3/6/24	Fri 9/12/25										
79		Mobilization	3 days	3 days	Wed 3/6/24	Fri 3/8/24										
80		Establish Building Control	3 days	3 days	Wed 3/6/24	Fri 3/8/24										
81		Install Site Fence Along Roadside	1 day	1 day	Wed 3/6/24	Wed 3/6/24										
82		Install BC Signage	2 days	2 days	Thu 3/7/24	Fri 3/8/24										
83		Site/Civil Work	291 days	291 days	Wed 3/6/24	Wed 4/30/25										
84		Erosion Control	20 days	20 days	Wed 3/6/24	Tue 4/2/24										
85		Wilbanks Mobilize	2 days	2 days	Wed 3/6/24	Thu 3/7/24										
86		Sawcut and Remove Curb for Construction Entrance	2 days	2 days	Fri 3/8/24	Mon 3/11/24										
87		Install Construction Entrance	1 day	1 day	Tue 3/12/24	Tue 3/12/24										
88		Layout LOD	1 day	1 day	Wed 3/13/24	Wed 3/13/24										
89		Install Tree Safe Fence	2 days	2 days	Thu 3/14/24	Fri 3/15/24										
90		Clear for Silt Fence	9 days	9 days	Mon 3/18/24	Thu 3/28/24										
91		Install Initial Erosion Control	2 days	2 days	Fri 3/29/24	Mon 4/1/24										
92		Initial Erosion Control Inspection	1 day	1 day	Tue 4/2/24	Tue 4/2/24										
93		Site Clearing	23 days	23 days	Fri 3/15/24	Tue 4/16/24										
94		Clear Trees	8 days	8 days	Fri 3/15/24	Tue 3/26/24										
95		Top Soil Removal	14 days	14 days	Wed 3/27/24	Mon 4/15/24										
96		Begin Balancing Site	1 day	1 day	Tue 4/16/24	Tue 4/16/24										
97		Demolition	8 days	8 days	Wed 4/17/24	Fri 4/26/24										
98		Remove Fencing	1 day	1 day	Wed 4/17/24	Wed 4/17/24										
99		Remove Guardrail	2 days	2 days	Thu 4/18/24	Fri 4/19/24										
100		Remove Remainder Curb Gutter & Sidewalk	5 days	5 days	Mon 4/22/24	Fri 4/26/24										
101		Site Utilities	60 days	60 days	Wed 6/12/24	Fri 9/6/24										
102		Storm	52 days	52 days	Wed 6/12/24	Mon 8/26/24										
103		Profile A	44 days	44 days	Wed 6/12/24	Wed 8/14/24										
104		Deliver Profile A	1 day	1 day	Wed 6/12/24	Wed 6/12/24										
105		Install A1 Head Wall to A2 Structure	3 days	3 days	Wed 6/12/24	Fri 6/14/24										
106		Install A2 to Invert of Detention	2 days	2 days	Mon 6/17/24	Tue 6/18/24										
107		Install OCS Structure A4	3 days	3 days	Mon 7/22/24	Wed 7/24/24										
108		Install Remainder of A line Structure	3 days	3 days	Mon 8/12/24	Wed 8/14/24										
109		Detention System	28 days	28 days	Mon 7/1/24	Fri 8/9/24										
110		Excavate for Underground Detention	13 days	13 days	Mon 7/1/24	Fri 7/19/24										
111		Install Gravel Bed	3 days	3 days	Mon 7/22/24	Wed 7/24/24										
112		Deliver Underground Detention System	1 day	1 day	Mon 7/22/24	Mon 7/22/24										
113		Install UDS	15 days	15 days	Mon 7/22/24	Fri 8/9/24										
114		Backfill Detention System 57 Stone	5 days	5 days	Mon 8/5/24	Fri 8/9/24										
115		Profile C	4 days	4 days	Mon 8/12/24	Thu 8/15/24										
116		Deliver Profile C	3 days	3 days	Mon 8/12/24	Wed 8/14/24										
117		Install C1 to Detention Vault	1 day	1 day	Thu 8/15/24	Thu 8/15/24										
118		Profile B	11 days	11 days	Mon 8/12/24	Mon 8/26/24										
119		Deliver Storm Profile B	1 day	1 day	Mon 8/12/24	Mon 8/12/24										

ID	Task Mode	Task Name	Duration	Remaining Duration	Start	Finish	2024				2025				2026
							Q1	Q2	Q3	Q4	Q1	Q2	Q3	Q4	Q1
120		Tie into Detention Vault	3 days	3 days	Mon 8/12/24	Wed 8/14/24									
121		Install Storm Profile B1-B6	6 days	6 days	Mon 8/12/24	Mon 8/19/24									
122		Install Storm Profile B6-B8	5 days	5 days	Tue 8/20/24	Mon 8/26/24									
123		Water	13 days	13 days	Tue 8/20/24	Fri 9/6/24									
124		8" Fire Water	13 days	13 days	Tue 8/20/24	Fri 9/6/24									
125		Deliver Fire Water Material	1 day	1 day	Tue 8/20/24	Tue 8/20/24									
126		Install 8" Water Line North to South	4 days	4 days	Tue 8/20/24	Fri 8/23/24									
127		Install 8" PIV	4 days	4 days	Tue 8/27/24	Fri 8/30/24									
128		Install 8" Water Vault	4 days	4 days	Tue 8/27/24	Fri 8/30/24									
129		Install 8" Gate Valve	1 day	1 day	Tue 9/3/24	Tue 9/3/24									
130		Logistic Plan Complete for Road Cut	5 days	5 days	Wed 8/21/24	Tue 8/27/24									
131		Make Road Cut for 8" Tap	1 day	1 day	Wed 9/4/24	Wed 9/4/24									
132		Make Fire Water Tap	2 days	2 days	Thu 9/5/24	Fri 9/6/24									
133		2" Domestic Water	5 days	5 days	Tue 8/20/24	Mon 8/26/24									
134		Deliver Domestic Water Material	1 day	1 day	Tue 8/20/24	Tue 8/20/24									
135		Install 2" Water North to South	4 days	4 days	Tue 8/20/24	Fri 8/23/24									
136		Install Valve Box	1 day	1 day	Mon 8/26/24	Mon 8/26/24									
137		Install Meter Box	1 day	1 day	Mon 8/26/24	Mon 8/26/24									
138		Relocate Fire Hydrant	2 days	2 days	Mon 8/26/24	Tue 8/27/24									
139		Remove Existing Hydrant	1 day	1 day	Mon 8/26/24	Mon 8/26/24									
140		Install Relocated Fire Hydrant	2 days	2 days	Mon 8/26/24	Tue 8/27/24									
141		TCOM	5 days	5 days	Mon 8/26/24	Fri 8/30/24									
142		Relocate	5 days	5 days	Mon 8/26/24	Fri 8/30/24									
143		Retaining Wall (Reinforced Slope)	56 days	56 days	Fri 6/21/24	Wed 9/11/24									
144		Mobilize	3 days	3 days	Fri 6/21/24	Tue 6/25/24									
145		Retaining Wall A2 - 1st Lift	11 days	11 days	Wed 6/26/24	Fri 7/12/24									
146		Retaining Wall A2 - 2nd Lift	21 days	21 days	Tue 8/13/24	Wed 9/11/24									
147		Retaining Wall A1	21 days	21 days	Tue 8/13/24	Wed 9/11/24									
148		Retaining Wall B	15 days	15 days	Tue 8/13/24	Tue 9/3/24									
149		Roadwork	181 days	181 days	Mon 8/12/24	Wed 4/30/25									
150		Main Drive	181 days	181 days	Mon 8/12/24	Wed 4/30/25									
151		Layout BOC Offset	1 day	1 day	Mon 8/12/24	Mon 8/12/24									
152		Fine Grade	5 days	5 days	Tue 8/13/24	Mon 8/19/24									
153		Proof Roll #1 (Dirt)	2 days	2 days	Tue 8/20/24	Wed 8/21/24									
154		Install Curb & Gutter	8 days	8 days	Thu 8/22/24	Tue 9/3/24									
155		Install 8" GAB	5 days	5 days	Wed 9/4/24	Tue 9/10/24									
156		Proof Roll #2 (Stone)	2 days	2 days	Wed 9/11/24	Thu 9/12/24									
157		Install 2" Binder	2 days	2 days	Fri 9/13/24	Mon 9/16/24									
158		Install 2" Top Course Asphalt (After Precast)	2 days	2 days	Tue 4/29/25	Wed 4/30/25									
159		Level 2 Entrance	180 days	180 days	Tue 8/13/24	Wed 4/30/25									
160		Layout BOC Offset	1 day	1 day	Tue 8/13/24	Tue 8/13/24									
161		Fine Grade	5 days	5 days	Wed 8/14/24	Tue 8/20/24									
162		Proof Roll #1 (Dirt)	2 days	2 days	Wed 8/21/24	Thu 8/22/24									
163		Install 8" GAB	5 days	5 days	Fri 8/23/24	Thu 8/29/24									
164		Install Curb & Gutter	8 days	8 days	Fri 8/30/24	Wed 9/11/24									
165		Proof Roll #2 (Stone)	2 days	2 days	Thu 9/12/24	Fri 9/13/24									
166		Install 2" Binder	2 days	2 days	Mon 9/16/24	Tue 9/17/24									
167		Install 2" Top Course Asphalt (After Precast)	2 days	2 days	Tue 4/29/25	Wed 4/30/25									
168		Level 3 Entrance	67 days	67 days	Tue 1/28/25	Wed 4/30/25									
169		Demo Curb & Gutter	1 day	1 day	Tue 1/28/25	Tue 1/28/25									
170		Layout/Elevations Road	1 day	1 day	Wed 1/29/25	Wed 1/29/25									
171		Layout BOC Offset	1 day	1 day	Wed 1/29/25	Wed 1/29/25									
172		Fine Grade	5 days	5 days	Thu 1/30/25	Wed 2/5/25									
173		Proof Roll #1 (Dirt)	2 days	2 days	Thu 2/6/25	Fri 2/7/25									
174		Install 8" GAB	5 days	5 days	Mon 2/10/25	Fri 2/14/25									
175		Install Curb & Gutter	8 days	8 days	Mon 2/17/25	Wed 2/26/25									
176		Proof Roll #2 (Stone)	2 days	2 days	Thu 2/27/25	Fri 2/28/25									
177		Install 2" Binder	2 days	2 days	Mon 3/3/25	Tue 3/4/25									
178		Install 2" Top Course Asphalt	2 days	2 days	Tue 4/29/25	Wed 4/30/25									
179		Shoring / Mass Excavation	101 days	101 days	Mon 5/6/24	Fri 9/27/24									
180		North Wall	39 days	39 days	Mon 5/6/24	Fri 6/28/24									
181		Shoring Mobilize	1 day	1 day	Mon 5/6/24	Mon 5/6/24									
182		North Wall 1st - 3rd Lift	31 days	31 days	Tue 5/7/24	Wed 6/19/24									

Northside Hospital Cherokee Parking Deck - 22359

07.16.24



ID	Task Mode	Task Name	Duration	Remaining Duration	Start	Finish	2024				2025				2026			
							Q1	Q2	Q3	Q4	Q1	Q2	Q3	Q4	Q1			
246		Pour Walls Lift 1	1 day	1 day	Thu 10/24/24	Thu 10/24/24												
247		Wreck/Form Lift 2	2 days	2 days	Fri 10/25/24	Mon 10/28/24												
248		Reinforce Walls Lift 2	2 days	2 days	Tue 10/29/24	Wed 10/30/24												
249		Pour Walls Lift 2	1 day	1 day	Thu 10/31/24	Thu 10/31/24												
250		Wreck/Form Lift 3	2 days	2 days	Fri 11/1/24	Mon 11/4/24												
251		Reinforce Walls Lift 3	2 days	2 days	Tue 11/5/24	Wed 11/6/24												
252		Pour Walls Lift 3	1 day	1 day	Thu 11/7/24	Thu 11/7/24												
253		Wreck Walls Lift 3	2 days	2 days	Fri 11/8/24	Mon 11/11/24												
254		Pit Walls	7 days	7 days	Thu 10/17/24	Fri 10/25/24												
255		Form Pit Walls	4 days	4 days	Thu 10/17/24	Tue 10/22/24												
256		Reinforce Pit Walls	2 days	2 days	Wed 10/23/24	Thu 10/24/24												
257		Pour	1 day	1 day	Fri 10/25/24	Fri 10/25/24												
258		Steel CIP Pedestals	5 days	5 days	Mon 10/28/24	Fri 11/1/24												
259		Reinforce Pedestals	2 days	2 days	Mon 10/28/24	Tue 10/29/24												
260		Form Pedestals	2 days	2 days	Wed 10/30/24	Thu 10/31/24												
261		Pour Pedestals	1 day	1 day	Fri 11/1/24	Fri 11/1/24												
262		Structure	137 days	137 days	Mon 11/4/24	Wed 5/21/25												
263		Structural Steel	27 days	27 days	Tue 11/12/24	Fri 12/20/24												
264		Install Columns and Beams Level 0-3	3 days	3 days	Tue 11/12/24	Thu 11/14/24												
265		Install Decking 1-3	2 days	2 days	Fri 11/15/24	Mon 11/18/24												
266		Install Stairs 0-3	3 days	3 days	Tue 11/19/24	Thu 11/21/24												
267		Steel Inspected	1 day	1 day	Fri 11/22/24	Fri 11/22/24												
268		Install Columns and Beams 3-6	3 days	3 days	Mon 11/25/24	Wed 11/27/24												
269		Install Decking 4-6	2 days	2 days	Mon 12/2/24	Tue 12/3/24												
270		Install Stairs 3-6	3 days	3 days	Wed 12/4/24	Fri 12/6/24												
271		Steel Inspected	1 day	1 day	Mon 12/9/24	Mon 12/9/24												
272		Install Columns 6-Roof	3 days	3 days	Tue 12/10/24	Thu 12/12/24												
273		Install Decking 6-Roof	2 days	2 days	Fri 12/13/24	Mon 12/16/24												
274		Install Stairs 6-7	3 days	3 days	Tue 12/17/24	Thu 12/19/24												
275		Steel Inspected	1 day	1 day	Fri 12/20/24	Fri 12/20/24												
276		Elevator Lobby Slabs	27 days	27 days	Tue 4/15/25	Wed 5/21/25												
277		Prep/Reinforce Slabs 1-2	5 days	5 days	Tue 4/15/25	Mon 4/21/25												
278		Pour Slabs 1-2	3 days	3 days	Tue 4/22/25	Thu 4/24/25												
279		Prep/Reinforce Slabs 3-4	5 days	5 days	Fri 4/25/25	Thu 5/1/25												
280		Pour Slabs 3-4	3 days	3 days	Fri 5/2/25	Tue 5/6/25												
281		Prep/Reinforce Slab 5-7	5 days	5 days	Wed 5/7/25	Tue 5/13/25												
282		Pour Slabs 5-7	3 days	3 days	Wed 5/14/25	Fri 5/16/25												
283		Pour Stairs	3 days	3 days	Mon 5/19/25	Wed 5/21/25												
284		Precast	100 days	100 days	Mon 11/4/24	Mon 3/31/25												
285		Precision Stone/Metromont Mobilize	2 days	2 days	Mon 11/4/24	Tue 11/5/24												
286		Assemble Crane	1 day	1 day	Mon 11/4/24	Mon 11/4/24												
287		Sequence 1- Elevator Tower/Stair 1	5 days	5 days	Tue 11/5/24	Mon 11/11/24												
288		Stair 2	5 days	5 days	Tue 11/12/24	Mon 11/18/24												
289		Column and Wall Install	10 days	10 days	Tue 11/12/24	Mon 11/25/24												
290		Sequence 2	20 days	20 days	Mon 11/11/24	Tue 12/10/24												
291		Sequence 3	10 days	10 days	Wed 12/11/24	Thu 12/26/24												
292		Sequence 4	10 days	10 days	Fri 12/27/24	Fri 1/10/25												
293		Sequence 5	10 days	10 days	Mon 1/13/25	Mon 1/27/25												
294		Sequence 6	10 days	10 days	Tue 1/28/25	Mon 2/10/25												
295		Sequence 7	10 days	10 days	Tue 2/11/25	Mon 2/24/25												
296		Sequence 8	10 days	10 days	Tue 2/25/25	Mon 3/10/25												
297		Sequence 9	10 days	10 days	Tue 3/11/25	Mon 3/24/25												
298		Sequence 10	5 days	5 days	Tue 3/25/25	Mon 3/31/25												
299		Topping Slabs	79 days	79 days	Fri 12/27/24	Fri 4/18/25												
300		Phase 1	34 days	34 days	Fri 12/27/24	Fri 2/14/25												
301		Pour 1	20 days	20 days	Fri 12/27/24	Mon 1/27/25												
302		Mesh	2 days	2 days	Fri 12/27/24	Mon 12/30/24												
303		Pour	1 day	1 day	Mon 1/27/25	Mon 1/27/25												
304		Pour 2	19 days	19 days	Tue 12/31/24	Tue 1/28/25												
305		Mesh	2 days	2 days	Tue 12/31/24	Thu 1/2/25												
306		Pour	1 day	1 day	Tue 1/28/25	Tue 1/28/25												
307		Pour 3	20 days	20 days	Fri 1/3/25	Fri 1/31/25												
308		Mesh	2 days	2 days	Fri 1/3/25	Mon 1/6/25												



ID	Task Mode	Task Name	Duration	Remaining Duration	Start	Finish	2024				2025				2026		
							Q1	Q2	Q3	Q4	Q1	Q2	Q3	Q4	Q1		
309	→	Pour	1 day	1 day	Fri 1/31/25	Fri 1/31/25											
310	→	Pour 4	19 days	19 days	Tue 1/7/25	Mon 2/3/25											
311	→	Mesh	2 days	2 days	Tue 1/7/25	Wed 1/8/25											
312	→	Pour	1 day	1 day	Mon 2/3/25	Mon 2/3/25											
313	→	Pour 5	19 days	19 days	Thu 1/9/25	Wed 2/5/25											
314	→	Mesh	2 days	2 days	Thu 1/9/25	Fri 1/10/25											
315	→	Pour	1 day	1 day	Wed 2/5/25	Wed 2/5/25											
316	→	Pour 6	19 days	19 days	Mon 1/13/25	Fri 2/7/25											
317	→	Mesh	2 days	2 days	Mon 1/13/25	Tue 1/14/25											
318	→	Pour	1 day	1 day	Fri 2/7/25	Fri 2/7/25											
319	→	Pour 7	18 days	18 days	Wed 1/15/25	Mon 2/10/25											
320	→	Mesh	2 days	2 days	Wed 1/15/25	Thu 1/16/25											
321	→	Pour	1 day	1 day	Mon 2/10/25	Mon 2/10/25											
322	→	SOG	14 days	14 days	Tue 1/28/25	Fri 2/14/25											
323	→	Underground Plumbing and Drainage	5 days	5 days	Tue 1/28/25	Mon 2/3/25											
324	→	Formwork	8 days	8 days	Tue 1/28/25	Thu 2/6/25											
325	→	Gravel	3 days	3 days	Tue 2/4/25	Thu 2/6/25											
326	→	Spray/Plastic	2 days	2 days	Fri 2/7/25	Mon 2/10/25											
327	→	Rebar/Mesh	3 days	3 days	Tue 2/11/25	Thu 2/13/25											
328	→	Pour	1 day	1 day	Fri 2/14/25	Fri 2/14/25											
329	→	Phase 2	20 days	20 days	Tue 2/25/25	Mon 3/24/25											
330	→	Pour 1	11 days	11 days	Tue 2/25/25	Tue 3/11/25											
331	→	Mesh	2 days	2 days	Tue 2/25/25	Wed 2/26/25											
332	→	Pour	1 day	1 day	Tue 3/11/25	Tue 3/11/25											
333	→	Pour 2	11 days	11 days	Thu 2/27/25	Thu 3/13/25											
334	→	Mesh	2 days	2 days	Thu 2/27/25	Fri 2/28/25											
335	→	Pour	1 day	1 day	Thu 3/13/25	Thu 3/13/25											
336	→	Pour 3	10 days	10 days	Mon 3/3/25	Fri 3/14/25											
337	→	Mesh	2 days	2 days	Mon 3/3/25	Tue 3/4/25											
338	→	Pour	1 day	1 day	Fri 3/14/25	Fri 3/14/25											
339	→	Pour 4	9 days	9 days	Wed 3/5/25	Mon 3/17/25											
340	→	Mesh	2 days	2 days	Wed 3/5/25	Thu 3/6/25											
341	→	Pour	1 day	1 day	Mon 3/17/25	Mon 3/17/25											
342	→	Pour 5	9 days	9 days	Fri 3/7/25	Wed 3/19/25											
343	→	Mesh	2 days	2 days	Fri 3/7/25	Mon 3/10/25											
344	→	Pour	1 day	1 day	Wed 3/19/25	Wed 3/19/25											
345	→	Pour 6	9 days	9 days	Tue 3/11/25	Fri 3/21/25											
346	→	Mesh	2 days	2 days	Tue 3/11/25	Wed 3/12/25											
347	→	Pour	1 day	1 day	Fri 3/21/25	Fri 3/21/25											
348	→	Pour 7	8 days	8 days	Thu 3/13/25	Mon 3/24/25											
349	→	Mesh	2 days	2 days	Thu 3/13/25	Fri 3/14/25											
350	→	Pour	1 day	1 day	Mon 3/24/25	Mon 3/24/25											
351	→	SOG	14 days	14 days	Tue 2/25/25	Fri 3/14/25											
352	→	Underground Plumbing and Drainage	5 days	5 days	Tue 2/25/25	Mon 3/3/25											
353	→	Formwork	8 days	8 days	Tue 2/25/25	Thu 3/6/25											
354	→	Gravel	3 days	3 days	Tue 3/4/25	Thu 3/6/25											
355	→	Spray/Plastic	2 days	2 days	Fri 3/7/25	Mon 3/10/25											
356	→	Rebar/Mesh	3 days	3 days	Tue 3/11/25	Thu 3/13/25											
357	→	Pour	1 day	1 day	Fri 3/14/25	Fri 3/14/25											
358	→	Phase 3	19 days	19 days	Tue 3/25/25	Fri 4/18/25											
359	→	Pour 1	7 days	7 days	Tue 3/25/25	Wed 4/2/25											
360	→	Mesh	2 days	2 days	Tue 3/25/25	Wed 3/26/25											
361	→	Pour	2 days	2 days	Tue 4/1/25	Wed 4/2/25											
362	→	Pour 2	7 days	7 days	Thu 3/27/25	Fri 4/4/25											
363	→	Mesh	2 days	2 days	Thu 3/27/25	Fri 3/28/25											
364	→	Pour	1 day	1 day	Fri 4/4/25	Fri 4/4/25											
365	→	Pour 3	6 days	6 days	Mon 3/31/25	Mon 4/7/25											
366	→	Mesh	2 days	2 days	Mon 3/31/25	Tue 4/1/25											
367	→	Pour	1 day	1 day	Mon 4/7/25	Mon 4/7/25											
368	→	Pour 4	6 days	6 days	Wed 4/2/25	Wed 4/9/25											
369	→	Mesh	2 days	2 days	Wed 4/2/25	Thu 4/3/25											
370	→	Pour	1 day	1 day	Wed 4/9/25	Wed 4/9/25											
371	→	Pour 5	6 days	6 days	Fri 4/4/25	Fri 4/11/25											

ID	Task Mode	Task Name	Duration	Remaining Duration	Start	Finish	2024				2025				2026			
							Q1	Q2	Q3	Q4	Q1	Q2	Q3	Q4	Q1			
372		Mesh	2 days	2 days	Fri 4/4/25	Mon 4/7/25												
373		Pour	1 day	1 day	Fri 4/11/25	Fri 4/11/25												
374		Pour 6	5 days	5 days	Tue 4/8/25	Mon 4/14/25												
375		Mesh	2 days	2 days	Tue 4/8/25	Wed 4/9/25												
376		Pour	1 day	1 day	Mon 4/14/25	Mon 4/14/25												
377		SOG	14 days	14 days	Tue 4/1/25	Fri 4/18/25												
378		Underground Plumbing and Drainage	5 days	5 days	Tue 4/1/25	Mon 4/7/25												
379		Formwork	8 days	8 days	Tue 4/1/25	Thu 4/10/25												
380		Gravel	3 days	3 days	Tue 4/8/25	Thu 4/10/25												
381		Spray/Plastic	2 days	2 days	Fri 4/11/25	Mon 4/14/25												
382		Rebar/Mesh	3 days	3 days	Tue 4/15/25	Thu 4/17/25												
383		Pour	1 day	1 day	Fri 4/18/25	Fri 4/18/25												
384		Stair 2	32 days	32 days	Tue 11/19/24	Wed 1/8/25												
385		Stair install	26 days	26 days	Tue 11/19/24	Mon 12/30/24												
386		Install Stairs 0-3	3 days	3 days	Tue 11/19/24	Thu 11/21/24												
387		Install Stairs 3-6	3 days	3 days	Wed 12/4/24	Fri 12/6/24												
388		Install Stairs 6-7	3 days	3 days	Tue 12/17/24	Thu 12/19/24												
389		Install Beams and decking	3 days	3 days	Fri 12/20/24	Thu 12/26/24												
390		Prep and Pour Stairs 7-4	3 days	3 days	Mon 12/23/24	Fri 12/27/24												
391		Prep and Pour Stairs 4-1	1 day	1 day	Mon 12/30/24	Mon 12/30/24												
392		Stair Roof	8 days	8 days	Fri 12/27/24	Wed 1/8/25												
393		Install Roof Drain	1 day	1 day	Fri 12/27/24	Fri 12/27/24												
394		Install Roof Insulation	2 days	2 days	Mon 12/30/24	Tue 12/31/24												
395		Install TPO Roofing	2 days	2 days	Thu 1/2/25	Fri 1/3/25												
396		Detail Roofing	2 days	2 days	Mon 1/6/25	Tue 1/7/25												
397		Stair Roof Dry-In	1 day	1 day	Wed 1/8/25	Wed 1/8/25												
398		Skin	40 days	40 days	Tue 3/25/25	Mon 5/19/25												
399		North Elevation	5 days	5 days	Tue 4/1/25	Mon 4/7/25												
400		Complete Precast Caulking	5 days	5 days	Tue 4/1/25	Mon 4/7/25												
401		East Elevation	40 days	40 days	Tue 3/25/25	Mon 5/19/25												
402		Complete Precast Caulking	5 days	5 days	Tue 4/8/25	Mon 4/14/25												
403		Corrugated Metal Panels	30 days	30 days	Tue 3/25/25	Mon 5/5/25												
404		Install Corrugated Metal Panel Vertical Support	10 days	10 days	Tue 3/25/25	Mon 4/7/25												
405		Install Corrugated Metal Panel Horizontal Gir	10 days	10 days	Tue 4/8/25	Mon 4/21/25												
406		Install Corrugated Metal Panels	10 days	10 days	Tue 4/22/25	Mon 5/5/25												
407		Stair Curtain Wall	10 days	10 days	Tue 5/6/25	Mon 5/19/25												
408		Install Stair Curtain Wall	10 days	10 days	Tue 5/6/25	Mon 5/19/25												
409		South Elevation	37 days	37 days	Tue 3/25/25	Wed 5/14/25												
410		ACM Metal Panels	25 days	25 days	Tue 3/25/25	Mon 4/28/25												
411		Install ACM Panels	20 days	20 days	Tue 3/25/25	Mon 4/21/25												
412		Peel & Caulk ACM Panels	10 days	10 days	Tue 4/15/25	Mon 4/28/25												
413		Elevator Lobby Curtain Wall	25 days	25 days	Thu 4/10/25	Wed 5/14/25												
414		Framing	10 days	10 days	Thu 4/10/25	Wed 4/23/25												
415		Glazing	10 days	10 days	Thu 4/24/25	Wed 5/7/25												
416		Final Caulking / Trim Out	5 days	5 days	Thu 5/8/25	Wed 5/14/25												
417		Canopy	27 days	27 days	Tue 4/8/25	Wed 5/14/25												
418		Install Canopy Steel	10 days	10 days	Tue 4/8/25	Mon 4/21/25												
419		Install Canopy Roof	10 days	10 days	Tue 4/22/25	Mon 5/5/25												
420		Install Canopy Roof Drain	2 days	2 days	Tue 5/6/25	Wed 5/7/25												
421		Install Canopy Façade	5 days	5 days	Thu 5/8/25	Wed 5/14/25												
422		West Elevation	5 days	5 days	Tue 4/15/25	Mon 4/21/25												
423		Complete Precast Caulking	5 days	5 days	Tue 4/15/25	Mon 4/21/25												
424		Elevators	60 days	60 days	Thu 4/3/25	Thu 6/26/25												
425		Passengers Car 1 & 3 (2 Crews)	40 days	40 days	Thu 4/3/25	Thu 5/29/25												
426		Passengers Car 2	20 days	20 days	Fri 5/30/25	Thu 6/26/25												
427		Lobby Build-Out	46 days	46 days	Fri 6/27/25	Wed 9/3/25												
428		Level 7-6	39 days	39 days	Fri 6/27/25	Fri 8/22/25												
429		Framing	2 days	2 days	Fri 6/27/25	Mon 6/30/25												
430		MEP Rough	8 days	8 days	Tue 7/1/25	Mon 7/14/25												
431		Inwall/Above Ceiling Inspection	1 day	1 day	Tue 7/15/25	Tue 7/15/25												
432		Hang Walls & Ceilings	4 days	4 days	Wed 7/16/25	Mon 7/21/25												
433		Finish	5 days	5 days	Tue 7/22/25	Mon 7/28/25												
434		Prime Walls	1 day	1 day	Tue 7/29/25	Tue 7/29/25												

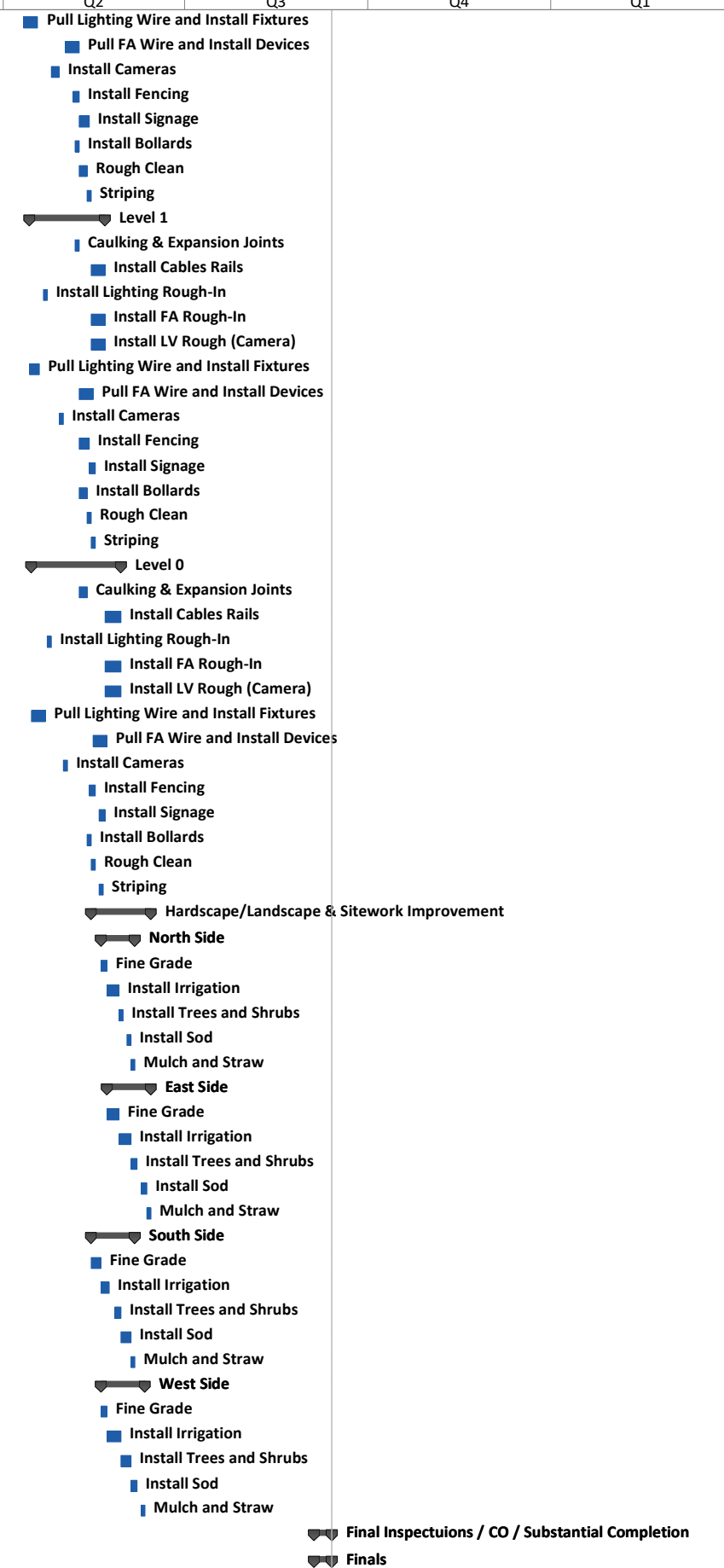


ID	Task Mode	Task Name	Duration	Remaining Duration	Start	Finish	2024				2025				2026	
							Q1	Q2	Q3	Q4	Q1	Q2	Q3	Q4	Q1	
435	➔	Point Up Walls	1 day	1 day	Wed 7/30/25	Wed 7/30/25										Point Up Walls
436	➔	First Coat Walls	1 day	1 day	Thu 7/31/25	Thu 7/31/25										First Coat Walls
437	➔	Install Storefront Doors	5 days	5 days	Fri 8/1/25	Thu 8/7/25										Install Storefront Doors
438	➔	Electrical Trim Out	1 day	1 day	Fri 8/8/25	Fri 8/8/25										Electrical Trim Out
439	➔	Install Mini-Split	5 days	5 days	Mon 8/11/25	Fri 8/15/25										Install Mini-Split
440	➔	Install Flooring & Base	3 days	3 days	Mon 8/18/25	Wed 8/20/25										Install Flooring & Base
441	➔	Final Point Up	1 day	1 day	Thu 8/21/25	Thu 8/21/25										Final Point Up
442	➔	Final Paint	1 day	1 day	Fri 8/22/25	Fri 8/22/25										Final Paint
443	➔	Level 5-3	39 days	39 days	Tue 7/8/25	Fri 8/29/25										Level 5-3
444	➔	Framing	2 days	2 days	Tue 7/8/25	Wed 7/9/25										Framing
445	➔	MEP Rough	8 days	8 days	Thu 7/10/25	Mon 7/21/25										MEP Rough
446	➔	Inwall/Above Ceiling Inspection	1 day	1 day	Tue 7/22/25	Tue 7/22/25										Inwall/Above Ceiling Inspection
447	➔	Hang Walls & Ceilings	4 days	4 days	Wed 7/23/25	Mon 7/28/25										Hang Walls & Ceilings
448	➔	Finish	5 days	5 days	Tue 7/29/25	Mon 8/4/25										Finish
449	➔	Prime Walls	1 day	1 day	Tue 8/5/25	Tue 8/5/25										Prime Walls
450	➔	Point Up Walls	1 day	1 day	Wed 8/6/25	Wed 8/6/25										Point Up Walls
451	➔	First Coat Walls	1 day	1 day	Thu 8/7/25	Thu 8/7/25										First Coat Walls
452	➔	Install Storefront Doors	5 days	5 days	Fri 8/8/25	Thu 8/14/25										Install Storefront Doors
453	➔	Electrical Trim Out	1 day	1 day	Fri 8/15/25	Fri 8/15/25										Electrical Trim Out
454	➔	Install Mini-Split	5 days	5 days	Mon 8/18/25	Fri 8/22/25										Install Mini-Split
455	➔	Install Flooring & Base	3 days	3 days	Mon 8/25/25	Wed 8/27/25										Install Flooring & Base
456	➔	Final Point Up	1 day	1 day	Thu 8/28/25	Thu 8/28/25										Final Point Up
457	➔	Final Paint	1 day	1 day	Fri 8/29/25	Fri 8/29/25										Final Paint
458	➔	Level 0-2	39 days	39 days	Thu 7/10/25	Wed 9/3/25										Level 0-2
459	➔	Framing	2 days	2 days	Thu 7/10/25	Fri 7/11/25										Framing
460	➔	MEP Rough	8 days	8 days	Mon 7/14/25	Wed 7/23/25										MEP Rough
461	➔	Inwall/Above Ceiling Inspection	1 day	1 day	Thu 7/24/25	Thu 7/24/25										Inwall/Above Ceiling Inspection
462	➔	Hang Walls & Ceilings	4 days	4 days	Fri 7/25/25	Wed 7/30/25										Hang Walls & Ceilings
463	➔	Finish	5 days	5 days	Thu 7/31/25	Wed 8/6/25										Finish
464	➔	Prime Walls	1 day	1 day	Thu 8/7/25	Thu 8/7/25										Prime Walls
465	➔	Point Up Walls	1 day	1 day	Fri 8/8/25	Fri 8/8/25										Point Up Walls
466	➔	First Coat Walls	1 day	1 day	Mon 8/11/25	Mon 8/11/25										First Coat Walls
467	➔	Install Storefront Doors	5 days	5 days	Tue 8/12/25	Mon 8/18/25										Install Storefront Doors
468	➔	Electrical Trim Out	1 day	1 day	Tue 8/19/25	Tue 8/19/25										Electrical Trim Out
469	➔	Install Mini-Split	5 days	5 days	Wed 8/20/25	Tue 8/26/25										Install Mini-Split
470	➔	Install Flooring & Base	3 days	3 days	Wed 8/27/25	Fri 8/29/25										Install Flooring & Base
471	➔	Final Point Up	1 day	1 day	Tue 9/2/25	Tue 9/2/25										Final Point Up
472	➔	Final Paint	1 day	1 day	Wed 9/3/25	Wed 9/3/25										Final Paint
473	➔	MEP Infrastructure	82 days	82 days	Wed 12/4/24	Wed 4/2/25										MEP Infrastructure
474	➔	Permanent Power	82 days	82 days	Wed 12/4/24	Wed 4/2/25										Permanent Power
475	➔	Electrical Underground	25 days	25 days	Wed 12/4/24	Fri 1/10/25										Electrical Underground
476	➔	Install Underground Conduit/Duct Bank Outside Building Footprint	10 days	10 days	Wed 12/4/24	Tue 12/17/24										Install Underground Conduit/Duct Bank Outside Building Footprint
477	➔	Pull Wire Electrical Room to Transformer	10 days	10 days	Wed 12/18/24	Fri 1/3/25										Pull Wire Electrical Room to Transformer
478	➔	GA Power Shutdown Transformer for Wire Make Up	5 days	5 days	Mon 1/6/25	Fri 1/10/25										GA Power Shutdown Transformer for Wire Make Up
479	➔	Electrical Room	40 days	40 days	Thu 2/6/25	Wed 4/2/25										Electrical Room
480	➔	Install CMU Walls	15 days	15 days	Thu 2/6/25	Wed 2/26/25										Install CMU Walls
481	➔	Build-Out Electrical Room	25 days	25 days	Thu 2/27/25	Wed 4/2/25										Build-Out Electrical Room
482	➔	Finish-Out	40 days	40 days	Thu 4/3/25	Thu 5/29/25										Finish-Out
483	➔	Level 7	20 days	20 days	Thu 4/3/25	Wed 4/30/25										Level 7
484	➔	Caulking & Expansion Joints	2 days	2 days	Mon 4/21/25	Tue 4/22/25										Caulking & Expansion Joints
485	➔	Install Cables Rails	5 days	5 days	Thu 4/3/25	Wed 4/9/25										Install Cables Rails
486	➔	Install Lighting Rough-In	2 days	2 days	Thu 4/3/25	Fri 4/4/25										Install Lighting Rough-In
487	➔	Install FA Rough-In	5 days	5 days	Thu 4/3/25	Wed 4/9/25										Install FA Rough-In
488	➔	Install LV Rough (Camera)	5 days	5 days	Thu 4/3/25	Wed 4/9/25										Install LV Rough (Camera)
489	➔	Pull Lighting Wire and Install Fixtures	5 days	5 days	Fri 4/4/25	Thu 4/10/25										Pull Lighting Wire and Install Fixtures
490	➔	Pull FA Wire and Install Devices	5 days	5 days	Fri 4/4/25	Thu 4/10/25										Pull FA Wire and Install Devices
491	➔	Install Cameras	2 days	2 days	Fri 4/11/25	Mon 4/14/25										Install Cameras
492	➔	Install Fencing	3 days	3 days	Tue 4/15/25	Thu 4/17/25										Install Fencing
493	➔	Install Signage	3 days	3 days	Fri 4/18/25	Tue 4/22/25										Install Signage
494	➔	Install Bollards	2 days	2 days	Wed 4/23/25	Thu 4/24/25										Install Bollards
495	➔	Rough Clean	2 days	2 days	Fri 4/25/25	Mon 4/28/25										Rough Clean

ID	Task Mode	Task Name	Duration	Remaining Duration	Start	Finish	2024				2025				2026
							Q1	Q2	Q3	Q4	Q1	Q2	Q3	Q4	Q1
496		Striping	2 days	2 days	Tue 4/29/25	Wed 4/30/25									
497		Level 6	20 days	20 days	Mon 4/7/25	Fri 5/2/25									
498		Caulking & Expansion Joints	2 days	2 days	Wed 4/23/25	Thu 4/24/25									
499		Install Cables Rails	5 days	5 days	Thu 4/10/25	Wed 4/16/25									
500		Install Lighting Rough-In	2 days	2 days	Mon 4/7/25	Tue 4/8/25									
501		Install FA Rough-In	5 days	5 days	Thu 4/10/25	Wed 4/16/25									
502		Install LV Rough (Camera)	5 days	5 days	Thu 4/10/25	Wed 4/16/25									
503		Pull Lighting Wire and Install Fixtures	5 days	5 days	Mon 4/7/25	Fri 4/11/25									
504		Pull FA Wire and Install Devices	5 days	5 days	Fri 4/11/25	Thu 4/17/25									
505		Install Cameras	2 days	2 days	Tue 4/15/25	Wed 4/16/25									
506		Install Fencing	3 days	3 days	Fri 4/18/25	Tue 4/22/25									
507		Install Signage	3 days	3 days	Wed 4/23/25	Fri 4/25/25									
508		Install Bollards	2 days	2 days	Fri 4/25/25	Mon 4/28/25									
509		Rough Clean	2 days	2 days	Tue 4/29/25	Wed 4/30/25									
510		Striping	2 days	2 days	Thu 5/1/25	Fri 5/2/25									
511		Level 5	21 days	21 days	Tue 4/8/25	Tue 5/6/25									
512		Caulking & Expansion Joints	2 days	2 days	Fri 4/25/25	Mon 4/28/25									
513		Install Cables Rails	5 days	5 days	Thu 4/17/25	Wed 4/23/25									
514		Install Lighting Rough-In	2 days	2 days	Wed 4/9/25	Thu 4/10/25									
515		Install FA Rough-In	5 days	5 days	Thu 4/17/25	Wed 4/23/25									
516		Install LV Rough (Camera)	5 days	5 days	Thu 4/17/25	Wed 4/23/25									
517		Pull Lighting Wire and Install Fixtures	5 days	5 days	Tue 4/8/25	Mon 4/14/25									
518		Pull FA Wire and Install Devices	5 days	5 days	Fri 4/18/25	Thu 4/24/25									
519		Install Cameras	2 days	2 days	Thu 4/17/25	Fri 4/18/25									
520		Install Fencing	3 days	3 days	Wed 4/23/25	Fri 4/25/25									
521		Install Signage	3 days	3 days	Mon 4/28/25	Wed 4/30/25									
522		Install Bollards	2 days	2 days	Tue 4/29/25	Wed 4/30/25									
523		Rough Clean	2 days	2 days	Thu 5/1/25	Fri 5/2/25									
524		Striping	2 days	2 days	Mon 5/5/25	Tue 5/6/25									
525		Level 4	22 days	22 days	Wed 4/9/25	Thu 5/8/25									
526		Caulking & Expansion Joints	2 days	2 days	Tue 4/29/25	Wed 4/30/25									
527		Install Cables Rails	5 days	5 days	Thu 4/24/25	Wed 4/30/25									
528		Install Lighting Rough-In	2 days	2 days	Fri 4/11/25	Mon 4/14/25									
529		Install FA Rough-In	5 days	5 days	Thu 4/24/25	Wed 4/30/25									
530		Install LV Rough (Camera)	5 days	5 days	Thu 4/24/25	Wed 4/30/25									
531		Pull Lighting Wire and Install Fixtures	5 days	5 days	Wed 4/9/25	Tue 4/15/25									
532		Pull FA Wire and Install Devices	5 days	5 days	Fri 4/18/25	Thu 4/24/25									
533		Install Cameras	2 days	2 days	Mon 4/21/25	Tue 4/22/25									
534		Install Fencing	3 days	3 days	Mon 4/28/25	Wed 4/30/25									
535		Install Signage	3 days	3 days	Thu 5/1/25	Mon 5/5/25									
536		Install Bollards	2 days	2 days	Thu 5/1/25	Fri 5/2/25									
537		Rough Clean	2 days	2 days	Mon 5/5/25	Tue 5/6/25									
538		Striping	2 days	2 days	Wed 5/7/25	Thu 5/8/25									
539		Level 3	23 days	23 days	Thu 4/10/25	Mon 5/12/25									
540		Caulking & Expansion Joints	2 days	2 days	Thu 5/1/25	Fri 5/2/25									
541		Install Cables Rails	5 days	5 days	Thu 5/1/25	Wed 5/7/25									
542		Install Lighting Rough-In	2 days	2 days	Tue 4/15/25	Wed 4/16/25									
543		Install FA Rough-In	5 days	5 days	Thu 5/1/25	Wed 5/7/25									
544		Install LV Rough (Camera)	5 days	5 days	Thu 5/1/25	Wed 5/7/25									
545		Pull Lighting Wire and Install Fixtures	5 days	5 days	Thu 4/10/25	Wed 4/16/25									
546		Pull FA Wire and Install Devices	5 days	5 days	Fri 4/25/25	Thu 5/1/25									
547		Install Cameras	2 days	2 days	Wed 4/23/25	Thu 4/24/25									
548		Install Fencing	3 days	3 days	Thu 5/1/25	Mon 5/5/25									
549		Install Signage	3 days	3 days	Tue 5/6/25	Thu 5/8/25									
550		Install Bollards	2 days	2 days	Mon 5/5/25	Tue 5/6/25									
551		Rough Clean	2 days	2 days	Wed 5/7/25	Thu 5/8/25									
552		Striping	2 days	2 days	Fri 5/9/25	Mon 5/12/25									
553		Level 2	24 days	24 days	Fri 4/11/25	Wed 5/14/25									
554		Caulking & Expansion Joints	2 days	2 days	Mon 5/5/25	Tue 5/6/25									
555		Install Cables Rails	5 days	5 days	Thu 5/8/25	Wed 5/14/25									
556		Install Lighting Rough-In	2 days	2 days	Thu 4/17/25	Fri 4/18/25									
557		Install FA Rough-In	5 days	5 days	Thu 5/8/25	Wed 5/14/25									
558		Install LV Rough (Camera)	5 days	5 days	Thu 5/8/25	Wed 5/14/25									

- ▣ Striping
- ▣ Level 6
 - ▣ Caulking & Expansion Joints
 - ▣ Install Cables Rails
 - ▣ Install Lighting Rough-In
 - ▣ Install FA Rough-In
 - ▣ Install LV Rough (Camera)
 - ▣ Pull Lighting Wire and Install Fixtures
 - ▣ Pull FA Wire and Install Devices
 - ▣ Install Cameras
 - ▣ Install Fencing
 - ▣ Install Signage
 - ▣ Install Bollards
 - ▣ Rough Clean
 - ▣ Striping
- ▣ Level 5
 - ▣ Caulking & Expansion Joints
 - ▣ Install Cables Rails
 - ▣ Install Lighting Rough-In
 - ▣ Install FA Rough-In
 - ▣ Install LV Rough (Camera)
 - ▣ Pull Lighting Wire and Install Fixtures
 - ▣ Pull FA Wire and Install Devices
 - ▣ Install Cameras
 - ▣ Install Fencing
 - ▣ Install Signage
 - ▣ Install Bollards
 - ▣ Rough Clean
 - ▣ Striping
- ▣ Level 4
 - ▣ Caulking & Expansion Joints
 - ▣ Install Cables Rails
 - ▣ Install Lighting Rough-In
 - ▣ Install FA Rough-In
 - ▣ Install LV Rough (Camera)
 - ▣ Pull Lighting Wire and Install Fixtures
 - ▣ Pull FA Wire and Install Devices
 - ▣ Install Cameras
 - ▣ Install Fencing
 - ▣ Install Signage
 - ▣ Install Bollards
 - ▣ Rough Clean
 - ▣ Striping
- ▣ Level 3
 - ▣ Caulking & Expansion Joints
 - ▣ Install Cables Rails
 - ▣ Install Lighting Rough-In
 - ▣ Install FA Rough-In
 - ▣ Install LV Rough (Camera)
 - ▣ Pull Lighting Wire and Install Fixtures
 - ▣ Pull FA Wire and Install Devices
 - ▣ Install Cameras
 - ▣ Install Fencing
 - ▣ Install Signage
 - ▣ Install Bollards
 - ▣ Rough Clean
 - ▣ Striping
- ▣ Level 2
 - ▣ Caulking & Expansion Joints
 - ▣ Install Cables Rails
 - ▣ Install Lighting Rough-In
 - ▣ Install FA Rough-In
 - ▣ Install LV Rough (Camera)

ID	Task Mode	Task Name	Duration	Remaining Duration	Start	Finish	2024				2025				2026		
							Q1	Q2	Q3	Q4	Q1	Q2	Q3	Q4	Q1		
559		Pull Lighting Wire and Install Fixtures	5 days	5 days	Fri 4/11/25	Thu 4/17/25											
560		Pull FA Wire and Install Devices	5 days	5 days	Fri 5/2/25	Thu 5/8/25											
561		Install Cameras	2 days	2 days	Fri 4/25/25	Mon 4/28/25											
562		Install Fencing	3 days	3 days	Tue 5/6/25	Thu 5/8/25											
563		Install Signage	3 days	3 days	Fri 5/9/25	Tue 5/13/25											
564		Install Bollards	2 days	2 days	Wed 5/7/25	Thu 5/8/25											
565		Rough Clean	2 days	2 days	Fri 5/9/25	Mon 5/12/25											
566		Striping	2 days	2 days	Tue 5/13/25	Wed 5/14/25											
567		Level 1	28 days	28 days	Mon 4/14/25	Wed 5/21/25											
568		Caulking & Expansion Joints	2 days	2 days	Wed 5/7/25	Thu 5/8/25											
569		Install Cables Rails	5 days	5 days	Thu 5/15/25	Wed 5/21/25											
570		Install Lighting Rough-In	2 days	2 days	Mon 4/21/25	Tue 4/22/25											
571		Install FA Rough-In	5 days	5 days	Thu 5/15/25	Wed 5/21/25											
572		Install LV Rough (Camera)	5 days	5 days	Thu 5/15/25	Wed 5/21/25											
573		Pull Lighting Wire and Install Fixtures	5 days	5 days	Mon 4/14/25	Fri 4/18/25											
574		Pull FA Wire and Install Devices	5 days	5 days	Fri 5/9/25	Thu 5/15/25											
575		Install Cameras	2 days	2 days	Tue 4/29/25	Wed 4/30/25											
576		Install Fencing	3 days	3 days	Fri 5/9/25	Tue 5/13/25											
577		Install Signage	3 days	3 days	Wed 5/14/25	Fri 5/16/25											
578		Install Bollards	2 days	2 days	Fri 5/9/25	Mon 5/12/25											
579		Rough Clean	2 days	2 days	Tue 5/13/25	Wed 5/14/25											
580		Striping	2 days	2 days	Thu 5/15/25	Fri 5/16/25											
581		Level 0	32 days	32 days	Tue 4/15/25	Thu 5/29/25											
582		Caulking & Expansion Joints	2 days	2 days	Fri 5/9/25	Mon 5/12/25											
583		Install Cables Rails	5 days	5 days	Thu 5/22/25	Thu 5/29/25											
584		Install Lighting Rough-In	2 days	2 days	Wed 4/23/25	Thu 4/24/25											
585		Install FA Rough-In	5 days	5 days	Thu 5/22/25	Thu 5/29/25											
586		Install LV Rough (Camera)	5 days	5 days	Thu 5/22/25	Thu 5/29/25											
587		Pull Lighting Wire and Install Fixtures	5 days	5 days	Tue 4/15/25	Mon 4/21/25											
588		Pull FA Wire and Install Devices	5 days	5 days	Fri 5/16/25	Thu 5/22/25											
589		Install Cameras	2 days	2 days	Thu 5/1/25	Fri 5/2/25											
590		Install Fencing	3 days	3 days	Wed 5/14/25	Fri 5/16/25											
591		Install Signage	3 days	3 days	Mon 5/19/25	Wed 5/21/25											
592		Install Bollards	2 days	2 days	Tue 5/13/25	Wed 5/14/25											
593		Rough Clean	2 days	2 days	Thu 5/15/25	Fri 5/16/25											
594		Striping	2 days	2 days	Mon 5/19/25	Tue 5/20/25											
595		Hardscape/Landscape & Sitework Improvement	21 days	21 days	Thu 5/15/25	Fri 6/13/25											
596		North Side	12 days	12 days	Tue 5/20/25	Thu 6/5/25											
597		Fine Grade	3 days	3 days	Tue 5/20/25	Thu 5/22/25											
598		Install Irrigation	3 days	3 days	Fri 5/23/25	Wed 5/28/25											
599		Install Trees and Shrubs	2 days	2 days	Thu 5/29/25	Fri 5/30/25											
600		Install Sod	2 days	2 days	Mon 6/2/25	Tue 6/3/25											
601		Mulch and Straw	2 days	2 days	Wed 6/4/25	Thu 6/5/25											
602		East Side	15 days	15 days	Fri 5/23/25	Fri 6/13/25											
603		Fine Grade	3 days	3 days	Fri 5/23/25	Wed 5/28/25											
604		Install Irrigation	4 days	4 days	Thu 5/29/25	Tue 6/3/25											
605		Install Trees and Shrubs	3 days	3 days	Wed 6/4/25	Fri 6/6/25											
606		Install Sod	3 days	3 days	Mon 6/9/25	Wed 6/11/25											
607		Mulch and Straw	2 days	2 days	Thu 6/12/25	Fri 6/13/25											
608		South Side	15 days	15 days	Thu 5/15/25	Thu 6/5/25											
609		Fine Grade	3 days	3 days	Thu 5/15/25	Mon 5/19/25											
610		Install Irrigation	4 days	4 days	Tue 5/20/25	Fri 5/23/25											
611		Install Trees and Shrubs	3 days	3 days	Tue 5/27/25	Thu 5/29/25											
612		Install Sod	3 days	3 days	Fri 5/30/25	Tue 6/3/25											
613		Mulch and Straw	2 days	2 days	Wed 6/4/25	Thu 6/5/25											
614		West Side	15 days	15 days	Tue 5/20/25	Tue 6/10/25											
615		Fine Grade	3 days	3 days	Tue 5/20/25	Thu 5/22/25											
616		Install Irrigation	4 days	4 days	Fri 5/23/25	Thu 5/29/25											
617		Install Trees and Shrubs	3 days	3 days	Fri 5/30/25	Tue 6/3/25											
618		Install Sod	3 days	3 days	Wed 6/4/25	Fri 6/6/25											
619		Mulch and Straw	2 days	2 days	Mon 6/9/25	Tue 6/10/25											
620		Final Inspectuions / CO / Substantial Completio	7 days	7 days	Thu 9/4/25	Fri 9/12/25											
621		Finals	7 days	7 days	Thu 9/4/25	Fri 9/12/25											



ID	Task Mode	Task Name	Duration	Remaining Duration	Start	Finish	2024				2025				2026
							Q1	Q2	Q3	Q4	Q1	Q2	Q3	Q4	Q1
622		Elevator Inspection	3 days	3 days	Thu 9/4/25	Mon 9/8/25									
623		Building Final Inspection	5 days	5 days	Fri 9/5/25	Thu 9/11/25									
624		Certificate of Occupancy	1 day	1 day	Fri 9/12/25	Fri 9/12/25									
625		Substantial Completion	1 day	1 day	Fri 9/12/25	Fri 9/12/25									
626		Owner Turnover	1 day	1 day	Fri 9/12/25	Fri 9/12/25									

- Elevator Inspection
- Building Final Inspection
- Certificate of Occupancy
- Substantial Completion
- Owner Turnover